

## Own a Classic: A stock 1969 small block V8 Camaro!



### ***Single owner, serial # matching, occasional driver***

Here's a rare item: A nice clean standard Camaro coupe that hasn't been hacked into a "tribute" car!

This is our "bought new" family car with original CA black and orange plates, the dealer window sticker and protect-o-plate, the visor starting guide, and even the owner's manual in the original bag! The first temporary registration from the dealer and registration card are also included. Gently driven, only 191K miles, garaged in Santa Cruz, Ca. since restoration.

### **Configuration**

- Body model 12437 9L 8 – Sport Coupe, built in Van Nuys, CA.
- Original engine, rebuilt transmission (serial numbers matching)  
307 "Economy" 2 BBL V8 - It gets over 20 MPG on the highway  
Turbo Hydramatic 350 Transmission, 2.73-1 10 bolt rear axle
- Power Steering & Power Front disc brakes (J-52 opt)

**\$29,000 USD**

For more information or to view,

Daev Roehr

e-mail: [daev@farmedia.com](mailto:daev@farmedia.com)

SMS: 831.295.0781

Center Console & Rosewood trim, gauge package

Restored interior



## Restoration notes

The restoration remains true to a 1969 year car, but is not completely OEM. (The few changes from original factory state were done for maintenance, safety, or convenience reasons.)

## Body

- **Main Body restoration performed in 1999, garaged since then.**
- Pictures of the body and paint restoration included with purchase.
- Original body color was Cortez Silver, now unavailable. New color is "1969 correct" Dover White.
- Re-chromed rear bumper, refurbished or replaced trim, replaced front grill and all emblems.
- Added passenger side mirror, windshield replaced.
- Restoration upgrades: Front & Rear spoilers, "Endura" front bumper, under hood lock (no holes in hood).

## Mechanical

- Engine block and heads all original (other than timing chain and gears replaced), carburetor rebuilt.
- Various accessories (water pump, alternator, regulator, starter, radiator, etc.) have been replaced over the years. Still has points!
- Transmission rebuilt 9/92 by reputable local shop, not AAMCO.
- Entire front end rebuilt 9/98. Power front disc brake upgrade installed (J-52), along with proportioning valve. Disc brakes required a switch to 15" rally rims from the original factory 14", along with a larger front torsion bar.
- Upgraded dual exhaust system (rebuilt 6/99) with pipes exiting in the correct places. Switched to a pair of stainless turbo mufflers instead of the "correct" low performance one in the tail. Has a nice rumble. Photo (below) shows differential and mufflers.



## Interior

- All new carpet, headliner, dash pad, rear package tray, and instrument carrier. (Rear package tray has "factory look" stereo speaker grille hole patterns.)
- Original seating was black vinyl. Rebuilt seats have new foam and are black and white hounds-tooth.
- Correct 1969 console gauge kit and upgrade tachometer in the dash pod. (I passed on the "tic-toc" clock.)
- Dead factory AM radio replaced with "factory look" AM/FM stereo radio with trunk CD changer. (No hacks to dash or package tray.)

Receipts included for all major work listed above, along with a passel of factory shop manuals and reference books.

## Known issues

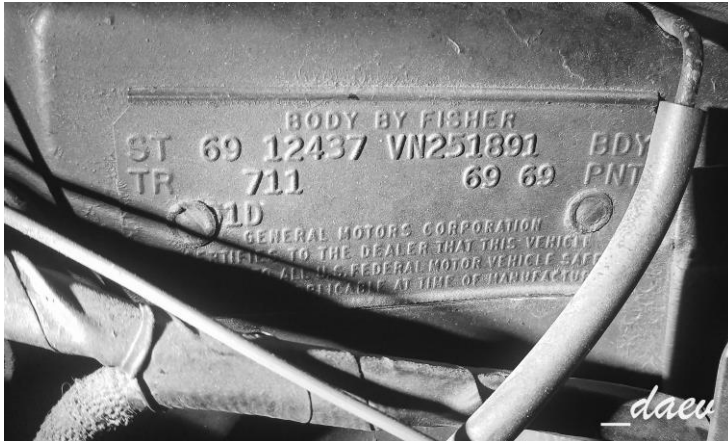
- 1) Engine:
  - a. This is the original engine, not rebuilt (aside from maintenance timing chain and gears replacement). It runs well on current premium, idles nicely, and passes smog.
  - b. The lifters are a little noisy, and the carb throttle positioner solenoid doesn't work anymore.
  - c. Heat riser rusted out years ago, and a technically incorrect one was installed to allow smog check to pass
- 2) Collision history:
  - a. Rear ended at low speed Aug 22, 2002. Modest rear end damage repaired by restorer, also new gas tank installed. (photos)
  - b. Front driver side panel and bumper damaged Jan 2003, low speed. (Coyote ran onto freeway onramp). Modest damage again repaired by restorer. (photos)
- 3) The windshield washers don't wash.
- 4) No spare tire.
- 5) Door panels are not restored, and are technically not correct for the houndstooth interior upgrade.

If you're looking for a great example of a stock Camaro coupe, or want a daily driver that gets decent mileage as an alternate to your big block V8, come take a look!



## Supporting photos:

Cowl Tag



Rear end diff



Engine compartment, view from drivers side.



Left side engine decal





Dealer To  
Whom Delivered  
34551 OXNARD, CAL.

Delivered To  
Dealer At  
(If Different  
From Above)

Make  
Vehicle

Identification  
Number

CHEVROLET

520987

Final  
Assembly  
Point

LEH782 11

LOS ANGELES CALIF.

CHEVROLET MOTOR DIVISION  
General Motors Corporation

251891



YOU GET  
ALL THESE VALUABLE  
QUALITY,  
SAFETY OR CONVENIENCE  
FEATURES  
AS STANDARD EQUIPMENT

- Outside rearview mirror
- Wide day-night inside mirror
- Energy-absorbing steering column and steering wheel
- Anti-theft lock system for ignition, steering and transmission selector
- Starter safety switch
- Automatic ignition key alarm
- Padded instrument panel and sun visors
- Seat belts with pushbutton buckles and outer front retractors
- Four-way hazard warning flasher
- Passenger-guard door locks with forward-mounted lock buttons
- Dual-speed electric windshield wipers and washer
- Engine exhaust emission control system
- Dual master cylinder brake system with warning light
- Side marker lights and parking lights that illuminate with headlights
- Back-up lights
- Flush-and-dry rocker panels
- Magic-Mirror acrylic lacquer finish
- Body by Fisher

AND MANY MORE ...

CHEVROLET MOTOR DIVISION  
General Motors Corporation



daeu

Manufacturer's Suggested Retail Price: (Includes Federal Excise Tax & Suggested Dealer Delivery & Handling Charge)

Model: 12437 8 CAMARO SPT COUPE

2727 00

Destination Charge

154 00

This vehicle was manufactured in compliance with all applicable Federal motor vehicle safety and exhaust emission control standards.

Subtotal

2881 00

Manufacturer's Suggested Retail Delivered Prices on Options and Accessories installed on this Vehicle by the Manufacturer

5A01AA SOFT-RAY TINTED GLASS  
5D55QA CENTER CONSOLE  
5M40CA TURBO HYDRA-MATIC  
5N40JB POWER STEERING  
5PW7JC F70 X 14 WHITE STRIPE TIRES  
5U63BB AM PUSHBUTTON RADIO  
5U8CAA REAR SEAT SPEAKER  
5ZJ7AC RALLY WHEELS  
5Z23HC SPECIAL INTERIOR GROUP  
5711AA BLACK VINYL TRIM  
5912BB 69-69 CORTEX SILVER

32 65  
53 75  
200 65  
94 80  
62 60  
61 10  
13 20  
35 85  
17 95  
00  
00

THIS CAR INCLUDES ASTRO VENTILATION,  
STRATO-BUCKET SEATS, FRONT SHOULDER  
BELTS, CARPETING, LIGHTER,  
HEAD RESTRAINTS,  
SPECIAL INTERIOR GROUP--WOOD-GRAIN  
INTERIOR ACCENTS, BRIGHT PEDAL TRIM

Factory Installed Options And Accessories

Subtotal

57 55

Total Amount (Does not include dealer installed options or accessories, state or local taxes or license fees)

\$ 3453 55

This label and the information thereon has been affixed to this motor vehicle by Chevrolet Motor Division, General Motors Corporation, pursuant to the requirements of Public Law 85-506, 85th Congress, which prohibits the removal or alteration of this label prior to the time that such automobile is delivered to the actual custody and possession of the ultimate purchaser.

Printed in U.S.A.



